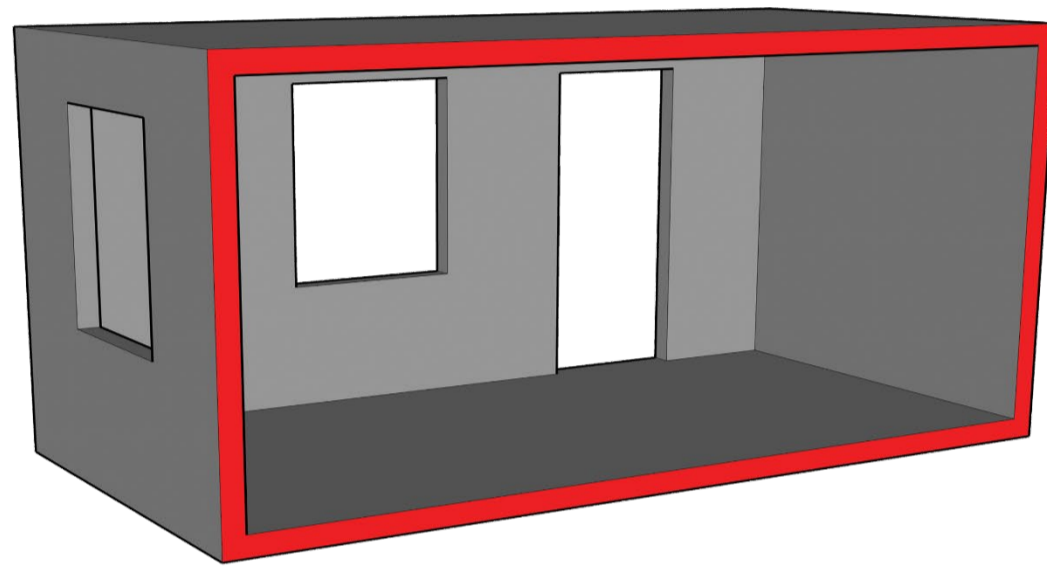


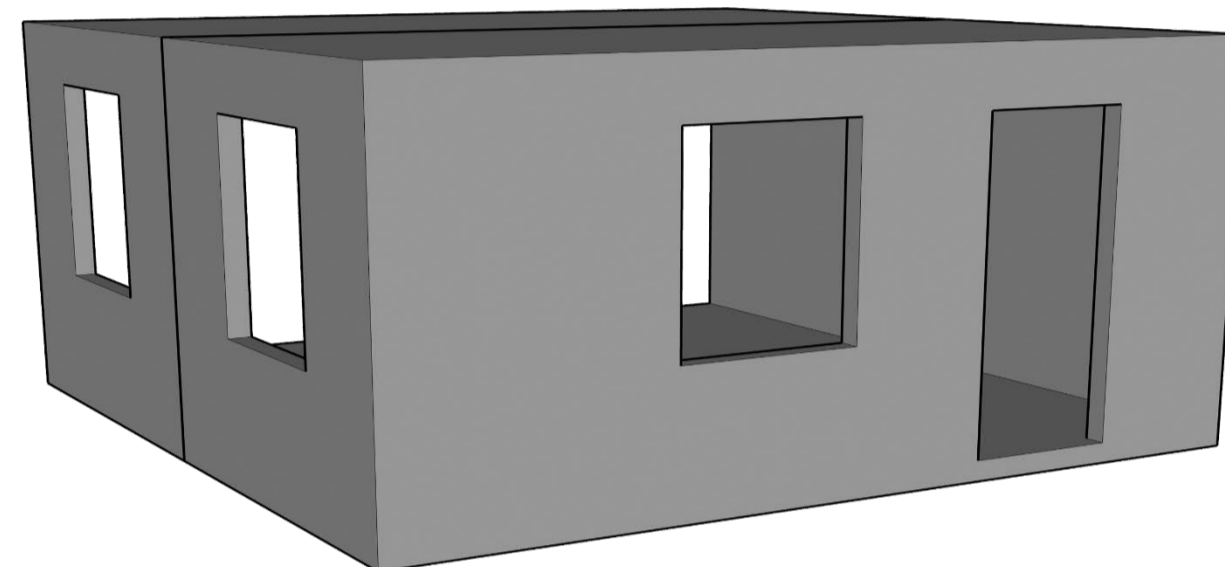
MODULAR CONSTRUCTION SYSTEM

Cost and time pressure as well as missing skilled workers are massive challenges for the construction industry. 3D construction systems solves the problem by prefabrication in the factory and fast assembly on site

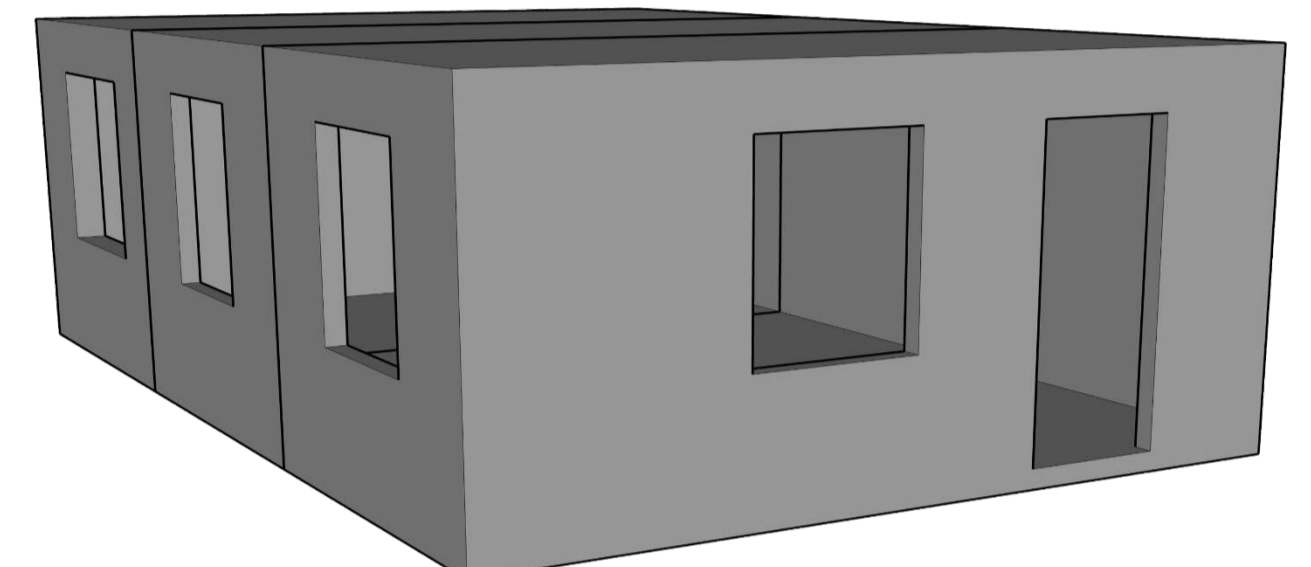
For example: Three XL modules build an affordable 65 m² apartment or house



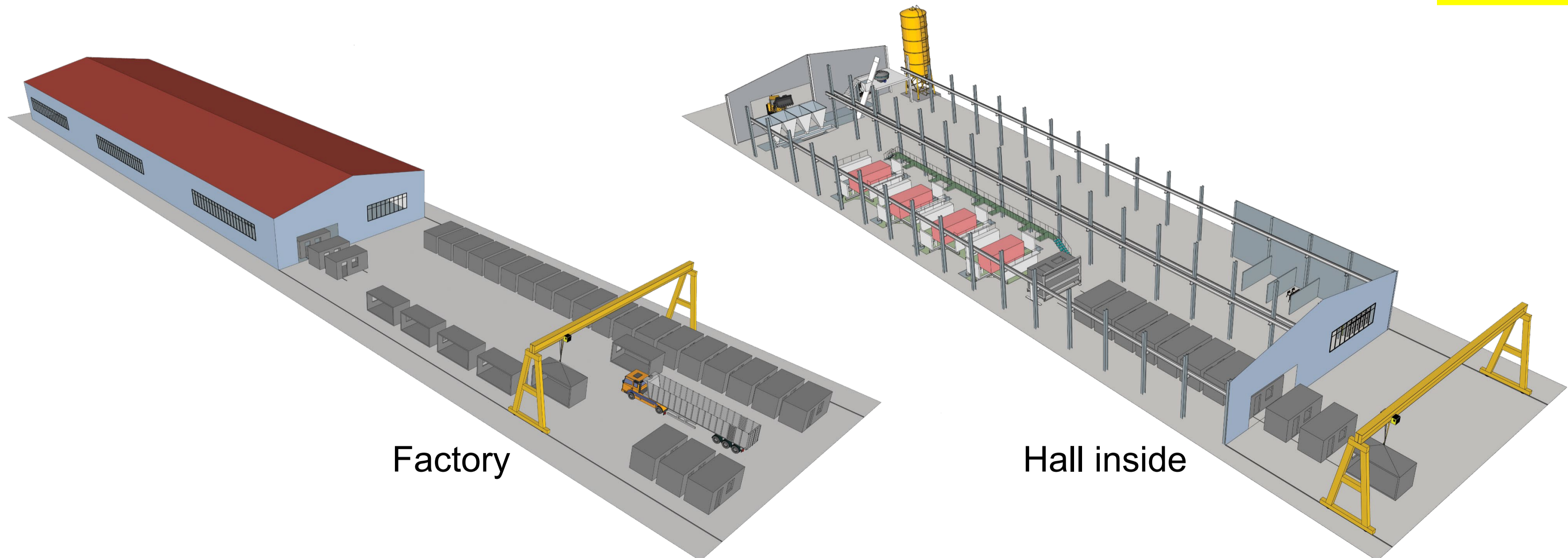
BASIC MODULE 21,13 m²



BASIC MODULE 21,13 m²
+ EXTENSION 22,10 m² = 43,23 m²



BASIC MODULE 21,13 m²
+ EXTENSION 22,10 m²
+ END MODULE 21,13 m² = **65 m² Living space**



Factory

Hall inside